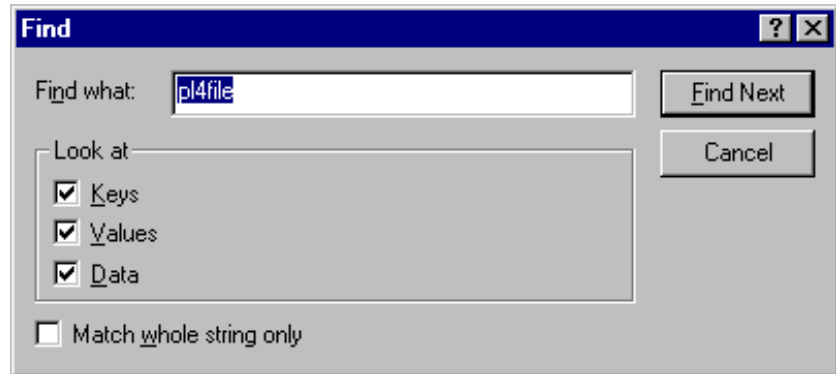


Pathloss Version 4.0 File Association

The pathloss installation program did not complete the Windows registry entry correctly on shipments before August 1999. Double clicking on a pathloss file (pl4) would start the program but did not load the file. The procedure to edit the registry and correct this problem is given in the steps below.

- Click Start - Run and enter the command line REGEDIT. Click OK to start the windows registry editor program.

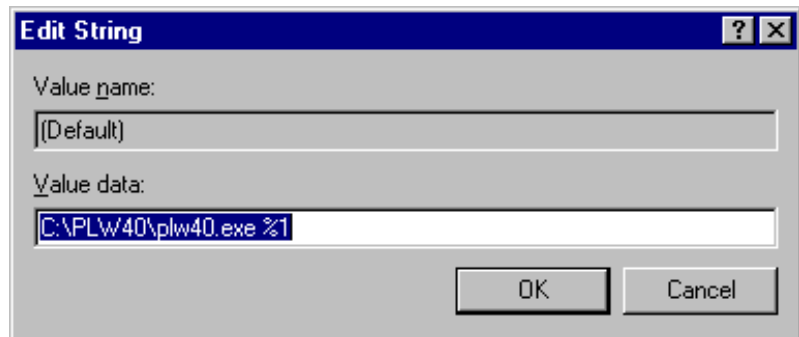
- Select Edit - Find.. on the menu bar and enter the search string pl4file.



- The correct location is shown in the directory structure on the right.



- Double click on the “ab” icon and edit the entry as shown. The %1 is the missing portion. The path name will be the directory that the pathloss program was installed in.



- Click OK and close REGEDIT program.